

PPX-AnyLink 6900

RADIUS / TACACS+ / OTP / NMS

NETWORK **A**UTHENTICATION & **M**ANAGEMENT FOR **M**EDIUM **B**USINESS



Authentication and Management for your Business

(Suggested Users 512-2,048) EntroLink designed PPX-AnyLink 6900 to fulfill the demand of Small AND Medium Businesses requiring a comprehensive Authentication and Management solution.

EntroLink PPX-AnyLink 6900 provides the most **RADIUS** function, **TACACS+** function, **OTP** function, **NMS** function, **VPN** function, **Firewall** function, **DNS Server** Function, **DHCP Server** function, **Captive Portal** function and another useful functions.

Simple Management

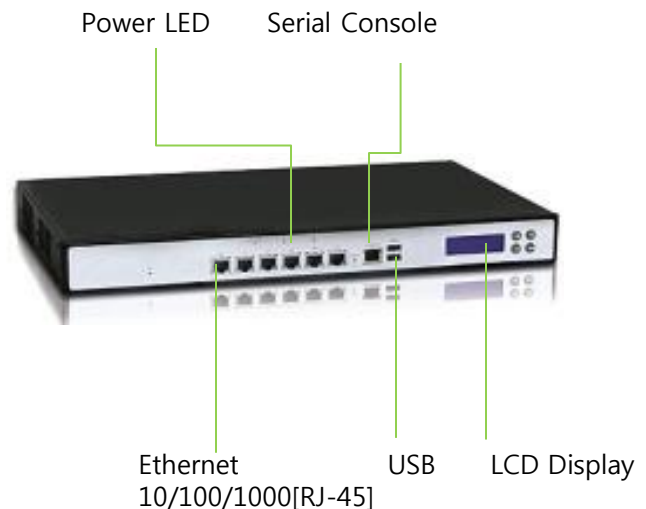
The PPX-AnyLink is Support WEB Management Console and SSH Monitoring Console.

Include Useful Monitoring tool

Can all packet monitoring and save log,
Also included syslog server daemon can permit network device's syslog to PPX-AnyLink.

We Got You Covered

Get the help or support you need from EntroLink.
We can online support resource or out network of qualified partner, we're help to help.



Highlights

- Easy configuration and management of all services
- Industrial standard support RADIUS, TACACS+, OTP, NMS
- Include very useful services DNS Server, DHCP Server, VPN Server, Syslog Server, Captive Portal, etc
- Support useful monitoring tool with Excel download.
- AES, ARIA, SEED, etc Algorithm Support

PPX-AnyLink Features

Network Security

- Police Base Packet Filtering
- Packet Firewall
- VLAN support[IEEE 802.3Q trunk]
- SNMP support
- Bridge mod[Inline] support
- bonding support
- VRRP support

Captive Portal

- Integrated RADIUS service
- Dynamic DRONE IP support
- Wire/Wireless support
- Traffic-based control
- Time-based control
- External RADIUS support
- MAC-based user control
- OTP Password support
- User less login support
- Smart device support
- Landing URL support
- Redirect URL support
- Manage modify auth page [html]

Hardware specifications

Case Rack	19" 1U Rack	CF	512MB
Power	200W	Log HDD	500GB
CPU	Intel 2.66GHz 4 Core	NIC	6 * 10/100/1000
RAM	8GB	Console	RJ-45 Serial Console
LCD	2 * 16 LCD display	USB	2 * USB 2.0

RADIUS Service

- RADIUS[802.1x, 802.11i] support
- Dynamic NAS IP support
- CA Authentication support
- EDUROM support
- RADIUS Proxy support
- EAP-PEAP, TTLS, TLS support
- MSCHAPv2, EAP-MD5, PAP, GTC
- Self Test support
- External DB(Oracle, AD) support
- Police(IP, MAC, SSID, etc) base Control
- OTP Password support
- SHA1, SHA256 password support

Routing

- Static Routing
- Source-based routing
- Destination-based routing

NAT

- Source-based NAT (SNAT)
- Destination-based NAT (DNAT)
- N-to-N NAT
- Incoming Routed NAT

TACACS+ Service

- TACACS+[RFC 1492] support
- Dynamic NAS IP support
- Police base control
- Command authentication support
- Service control
- Self Test support
- login/enable level control
- login time control
- OTP password support

Log and Report

- Live log viewer [jQuery-based]
- Syslog Server[local, remote]
- Dashboard
- All service log generation
- Excel download
- Send alert E-Mail

Other Service

- DHCP Server [Fail over, Multi subnet]
- DNS Server [Multi Domain]
- NTP Server
- SSL VPN Service With RADIUS
- PPTP Server With RADIUS
- IPSEC Server
- SNMP Server [get OID, value display]
- SNMPTRAP Receive
- IP Management [Block IP, Block MAC]
- Smart phone OTP APP support
- Windows OTP software support
- Multi Language support

EntroLink International

Tel: +82-2-402-6425

E-mail: sale@entrolink.com

URL : <http://www.entrolink.com>

PPX-AnyLink UI Sample



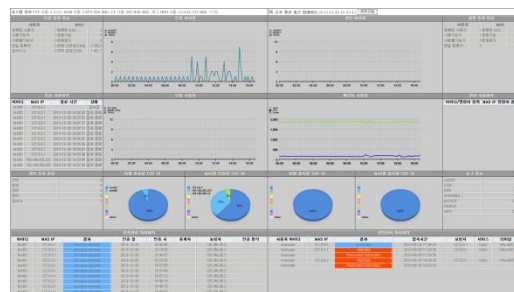
User Status



Auth Status



Auth Analyze



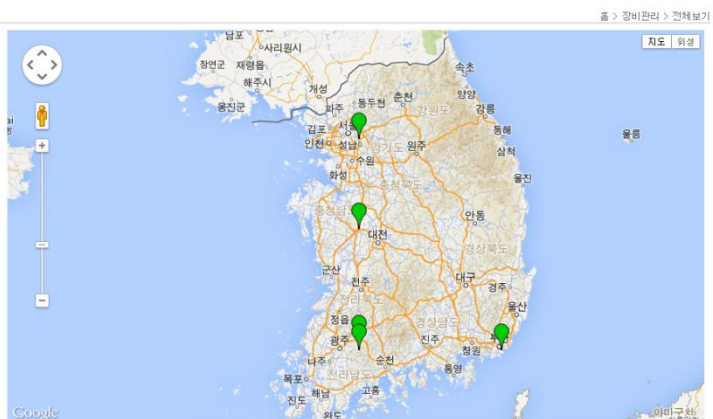
Dashboard



Auth Result



Connect Result



Device Status